

Pasadena Office of Emergency Management



The Frank Bengochea Emergency Operations Center

Leaders who don't listen will eventually be surrounded by people who have nothing to say
- Andy Stanley



OEM Staff



Azell Carter
Emergency Management Coordinator



Andrew Aleman
Senior Deputy
Emergency Management Coordinator



Josephine Espinosa
Senior Administrative Assistant
EOC Support



Erik Sweet
Emergency Management Planner
EOC Manager



Clint Devillier
Radio Technician IV
EOC Manager



Josh Butler
Radio Technician IV
EOC Support



OEM OVERVIEW

1 CNN			2 ABC	3 NBC			4 FOX
			5 CBS	6 TWC			

PIO X7078	FIRE X5582	FIRE X5582	EMS X5583	POLICE X5581	POLICE X5581	EOC SUPPORT X5588
--------------	---------------	---------------	--------------	-----------------	-----------------	-------------------------

PLANNING X7084	PURCHASING X5587	PUBLIC WORKS X5584	PUBLIC WORKS X5584
-------------------	---------------------	--------------------------	--------------------------

HEALTH X5586	HEALTH X5586	FACILITIES MAINTENANCE X7085	INFROMATION TECHNOLOGY X5509
-----------------	-----------------	------------------------------------	------------------------------------

FINANCE/ LIASON X7098/4488	NGO/VOAD PUB. UTILS X7086/7078	MEDICAL LEPC/CIMA X7087/7079	PASADENA ISD X7096
----------------------------------	--------------------------------------	------------------------------------	--------------------------

EOC MANGER X5585	HR X7097	PARKS & REC X7094	LEGAL X7062
------------------------	-------------	-------------------------	----------------

- 23 Positions
- Shelter In Place
- Rated for 155 MPH
- Ballistics Rated Windows
- 2 Back up Generators
- 3 UPS
- POTS Lines
- Cell Phones
- Satellite Communications
- Mission Critical Radios
- Phone Bank
- 4 Positions
- Tactical Operations
- 4 HAM Positions



PRIMARY EOC

OEM Overview

Glossary of Terms

- OEM – Office of Emergency Management
- EMC – Emergency Management Coordinator
- DEMC – Deputy Emergency Management Coordinator
- EOC – Emergency Operations Center
- SERLEPC – Southeast Regional LEPC
- CEC – Community Emergency Communications



OEM Overview

Pasadena Risk & Hazards:

- Chemical Release
- Flooding
- Fires & Explosions
- Hurricane
- Tornado
- Power Outage
- Communicable Disease
- Plane Crash
- MCI/Shootings
- Severe Weather
- Riots
- Terrorists



Equipment

- 2 Light Military Trucks w/canopy covers.
 - Scheduled for purchase of 3-5 more.
 - High Water fording
 - Automatic Transmission
 - Air Brake System
 - Will be issued to PD/FD in an event
- Building/Mobile Satellite Communication
- Radio Site on Wheels
- Command Trailer for remote event
 - Complete with cellular internet/Wi-Fi with redundant FirstNet/Verizon carriers, 4 computer/radio positions, telephone/fax/copy/print/scan capabilities, air conditioned, gas generator, and shore power.



Remote Use

- 24 Cache Public Safety Radios
- 16 Dell Laptops
- 16 Apple iPhone on FirstNet
 - Hotspot enabled
- 20 Apple iPad Mini's on FirstNet



Communications Tools Overview

- **Incoming**

- E-Notify
- Telephone
- Radio
- 9-1-1

- **Outgoing**

- Municipal Sirens
- AM Radio
- Telephone Notification (Register your Cell Phone)
- E-mail/Text Message
- Social Media
- Vehicle sirens or public address systems
- CAER Line
- Greater Harris County 911 Network
- Swift 911
- Cable TV Override
- Municipal Channel
- Emergency Alert System (EAS)
- News coverage



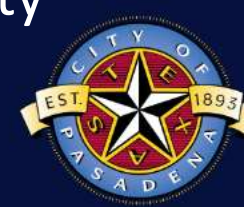
Pasadena Siren Locations

- Unit 1001 SH 225 @ Richey
- Unit 1002 Red Bluff @ Crown Refinery
- Unit 1022 Red Bluff @ Patrick
- Unit 1003 SH 225 @ Crown Tank
- Unit 1004 SH 225 @ Burke / Preston
- Unit 1005 SH 225 @ 3508 SH225 (Kelsey)
- Unit 1010 Beltway 8 @ Greenshadows
- Unit 1011 Beltway 8 @ Red Bluff
- Unit 1012 Beltway 8 @ Sycamore
- Unit 1013 Beltway 8 @ Vista
- Unit 1061 El Jardin @ Donald
- Unit 1030 Red Bluff @ Jana
- Unit 1041 Wichita @ Oaks
- Unit 1021 Southmore @ Jeff Ginn Mem. Dr.
- Unit 1023 Red Bluff @ Southmore



Community Emergency Communications

- Communication of Industrial Emergency Response Incidents and Other Significant Events
- CEC protocols apply to both plants and city, so plants are to use those level definitions when they notify the city, no matter what they may call them internally.
 - Level 1 - Courtesy Notification
 - Level 2 - (Watch) Potential Off Site Impact
 - Level 3 - (Warning) Off Site Impact
- The city will use its community warning systems if the situation warranted it, regardless of the recommendation from the stricken facility



Community Emergency Communications

- Ready Pasadena Alert System
 - Text PTXREADY to 77295
- Pasadena Social Media
 - www.pasadenatx.gov
 - YouTube
 - Facebook
 - Twitter
 - Instagram
- CAER Online
 - Download app from your app store



Ready Pasadena

Stay informed.
Get  **OEM Alerts**
MAYOR BETTMANN OFFICE OF EMERGENCY MANAGEMENT



READY
PASADENA

Text **PTXREADY** to **77295**
or go to
www.ReadyPasadena.org



Information Sharing

Important Communication Flows

EOC/Mayor ↔ Partner Agencies (TDEM, FEMA, NWS)

EOC ↔ Mayor ↔ First Responders

Mayor ↔ Chief of Staff ↔ Support Departments (Public Works, etc.)

EOC ↔ Mayor ↔ Community Relations/PIO

Public Messaging

Staff Messaging



SERLEPC E-Notify Notifications (2022)

- Level 1 – Courtesy Notification: 281
- Level 2 – (Watch) Potential Off Site: 10
- Level 3 – (Warning) Off Site Impact: 2
- Drill, Exercise, or Fire Training: 101
- System Test: 941
- Training Report Submittal: 112



Shelter In-Place

Who initiates a shelter-in-place?

- City of Pasadena
 - Police Department
 - Fire Department
 - Office of Emergency Management (OEM)
- Stricken Facility Recommends



Levels of EOC Activation

Level 4: Normal Conditions - Emergency incidents occur and local officials are notified. One or more departments or agencies respond to handle the incident; an incident command post may be established. Limited assistance may be requested from other jurisdictions pursuant to established inter-local agreements. The normal operations of government are not affected.

Level 3: Increased Readiness - Increased Readiness refers to a situation that presents a greater potential threat than “Level 4”, but poses no immediate threat to life and/or property.

Level 2: High Readiness - High Readiness refers to a situation with a significant potential and probability of causing loss of life and/or property.

Level 1: Maximum Readiness - Maximum Readiness refers to situation that hazardous conditions are imminent.



EOC Activation Scenarios

Partial Activation -

- Specific personnel are called upon for EOC activation based on the needs of the event.
- These events can include but are not limited to; severe rain/flooding, extreme temperatures, industrial incidents, health emergencies, civil unrest, city events, etc.
- Typical “Core” departments to staff the EOC include; OEM, PD, Fire, EMS, Public Works.
- Usually only last for 1 to 2 operational periods of 12 hour shifts, but can be less or more.



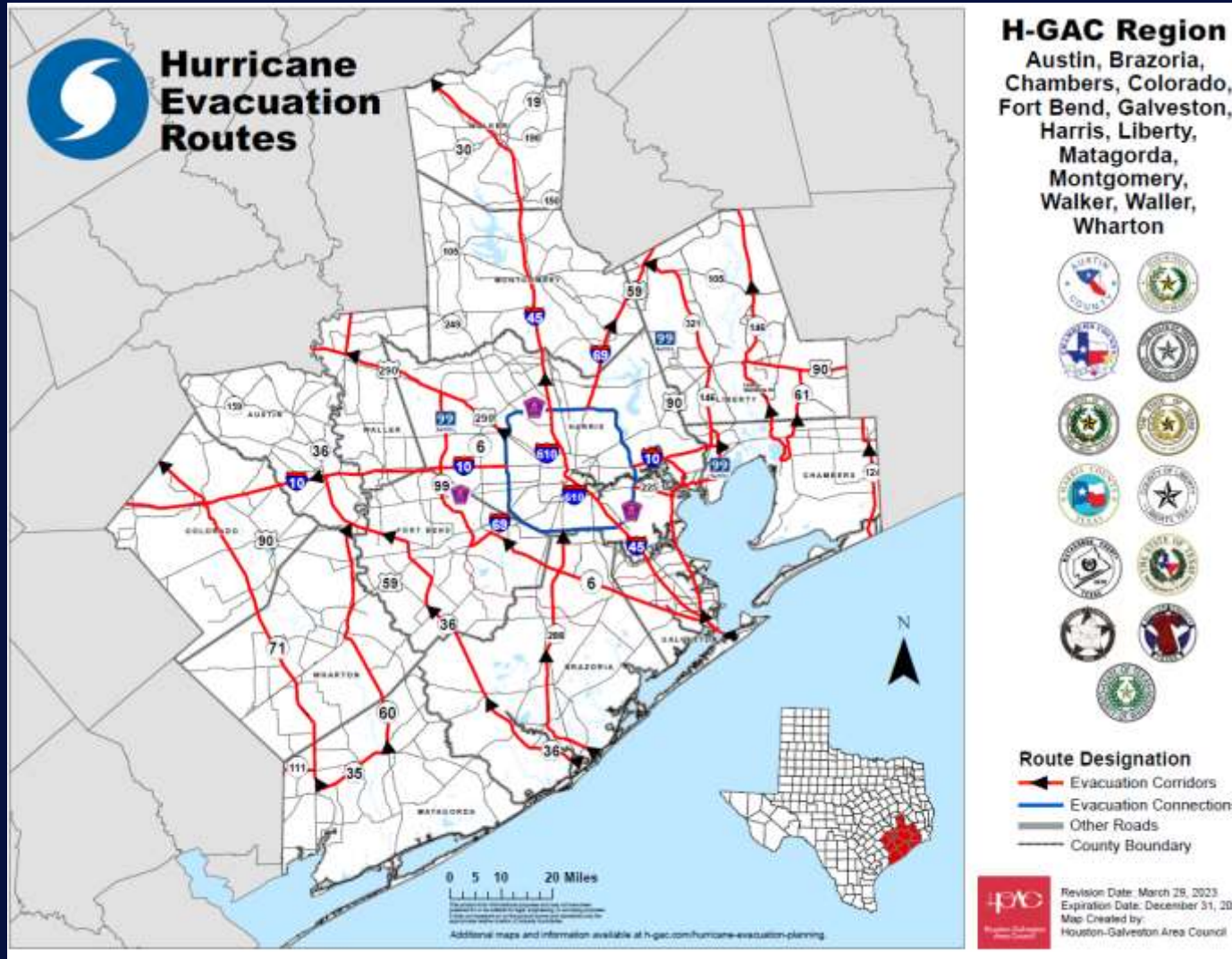
EOC Activation Scenarios

Full Activation -

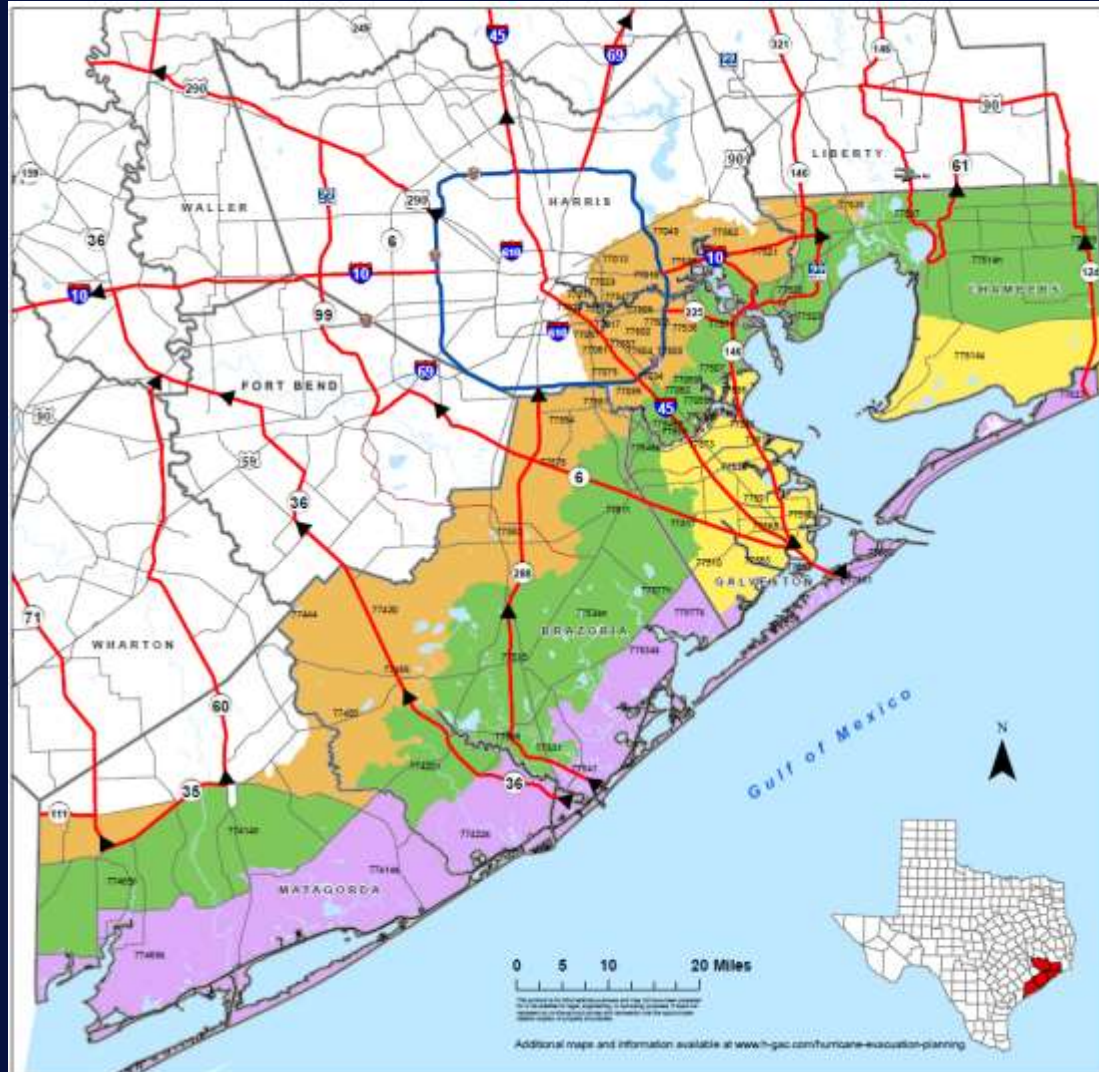
- All Personnel are called upon for activation due to a significant event.
- The impact of events can effect the entire city, region, state and/or nation. Historically full activations have occurred for direct impacts from Hurricanes, with the last activation being Hurricane Harvey 2017.
- Usually can last multiple operating periods, through multiple shifts.



2023 Hurricane Evacuation Routes



2023 Evacuation Zip-Zone Map



Brazoria, Chambers, Galveston, Harris and Matagorda Hurricane Evacuation Zip-Zones Coastal, A, B, C

ZIP ZONE COASTAL				
77414s	77422s	77405s	77534s	77541
77550	77551	77554	77563	77577a
77623				
ZIP ZONE A				
77058s	77010	77514s	77518	77539
77563	77565	77568	77573	77586
77590	77691			
ZIP ZONE B				
77058s	77059	77062	77414s	77422s
77465s	77507	77511	77514s	77515
77517	77520	77523	77521	77534n
77546s	77548s	77560	77566	77571
77571n	77597	77598	77605	
ZIP ZONE C				
77011	77012	77013	77015	77017
77023	77025	77034	77049	77081
77075	77087	77088	77430	77444
77480	77486	77502	77503	77604
77606	77608	77621	77630	77636
77536	77547	77562	77578	77581
77583	77584	77587		

Some zip codes are split into north (n) and south (s) for evacuation purposes.

- Route Designation**
- ← Evacuation Corridors
 - Evacuation Connections
 - Other Roads
 - County Boundary



Revision Date: March 29, 2023
 Expiration Date: December 31, 2023
 Map Created by:
 Houston-Galveston Area Council



Contact Information

oem@pasadenatx.gov

713-475-5588

Azell Carter

- Emergency Management Coordinator
- acarter@pasadenatx.gov
- c:281.687.9193



Andrew Aleman

- Deputy Emergency Management Coordinator
- aaleman@pasadenatx.gov
- c:346.221.5940

