

**HARRIS COUNTY SHERIFF'S OFFICE  
HOMELAND SECURITY BUREAU  
MARITIME TACTICAL  
OPERATIONS SECTION**



**Lt. Steve Twitty**

# Maritime Tactical Operations Section

- The MTOS is made up of the following groups:
- Marine Unit
- Dive Team
- Industrial Unit
- SMAG (Security Monitoring Assessment Group)



# Maritime Tactical Operations Section Marine Unit



# Maritime Tactical Operations Section

- 5 full-time Marine Deputies
- Three full-time Industrial Deputies
- One Sergeant
- Boats moored Kemah Marina and USCG Station Houston
- Marine Base in La Porte



# Maritime Tactical Operations Section

## 44' Archangel SAFEBoat



- Positive Pressure cabin for CBRNE Incidents
- Radiological Detection Sensors
- Twin Diesel Water Jet Propulsion
- Water Cannon
- SeaKeeper Gyro stabilized system



# Maritime Tactical Operations Section



## SAFEboat 35' Multi-Mission Interceptor

- Seakeeper Gyro-Stabilizing system
- Skyhook GPS Self Position Locking system
- Radiation Detection Capabilities
- Triple 350 Outboards
- FLIR Thermal Camera



# Maritime Tactical Operations Section

- 35' Center Console SAFEboat
- Triple 350 Outboards
- Open deck space for various operations
- FLIR Thermal Camera





# Maritime Tactical Operations Section

- 33' Defender Class SAFEboat
- Triple 350 Mercury Engines
- FLIR M400 Thermal Camera System





# Maritime Tactical Operations Section

- 27' Defender Class SAFEboat
- Twin Mercury 300 Engines
- FLIR Thermal Camera



# Maritime Tactical Operations Section

- Boatright flat bottom dive boats
- Shallow water Rescue and Recovery





# Maritime Tactical Operations Section Dive Team



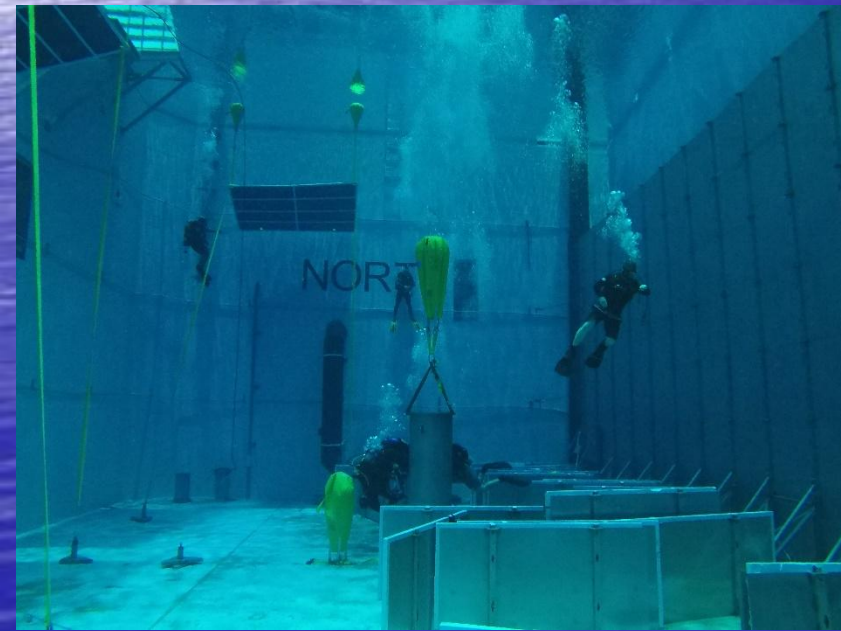
# Maritime Tactical Operations Section

- 9 Full-time Public Safety Divers
- 3 On-Call Public Safety Divers
- 8 Certified Commercial Divers
- 4 Bomb Tech Public Safety Divers
- 2 Team Doctors / Public Safety Divers





## NASA NEUTRAL BUOYANCY LAB





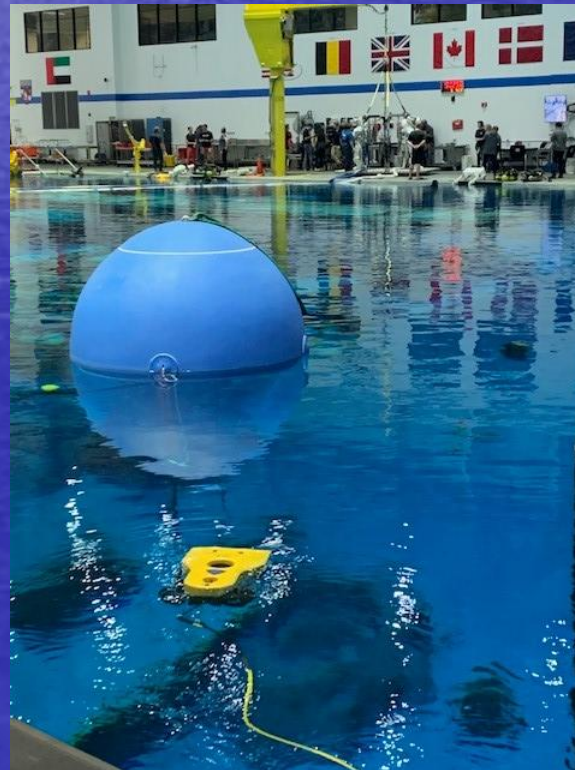




# Maritime Tactical Operations Section

The unit is equipped with two Pro 5 and one Defender Videoray ROVs.

- The ROVs can be deployed waterside or landside and have high-definition video and sonar capabilities.



# Videoray Defender Remotely Operated Vehicle





# Videoray Defender

- The Videoray Defender ROV is a remotely operated underwater vehicle capable of operating in depths up to 1000 meters. The Defender weighs 38lbs and is equipped with a camera, Sonar, manipulator arm and GPS to allow for precise mapping of a search area. The Defender has up to 59lbs of thrust allowing it to operate in currents too strong for smaller ROVs.

# Videoray Pro 5 ROV





# Videoray Pro 5 ROV

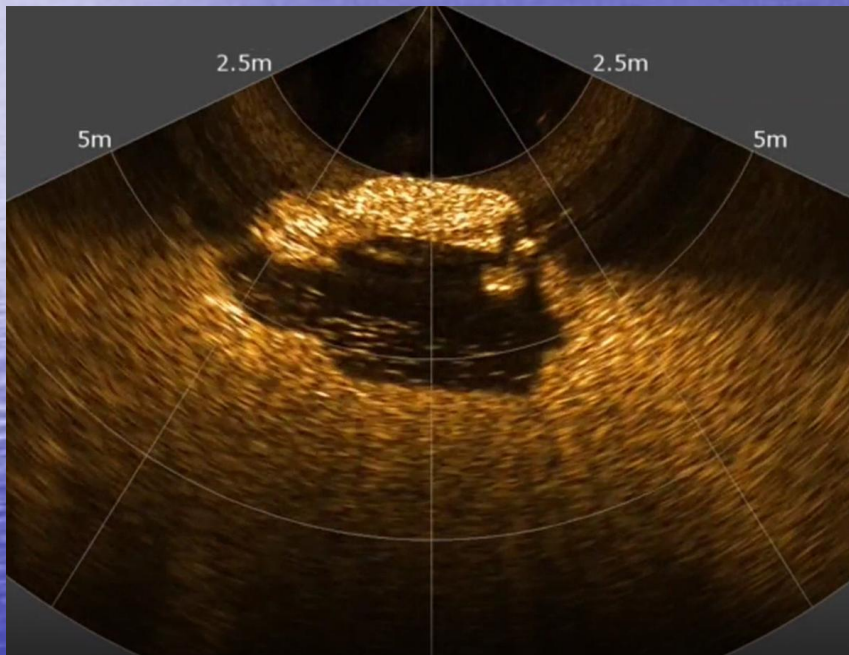
- The Videoray Pro 5 ROV is a smaller ROV making it more portable and easier to use in confined spaces. It weighs 26lbs and can operate at depths up to 305 meters. The Pro 5 is also equipped with a camera and sonar for locating underwater targets.

# Capabilities

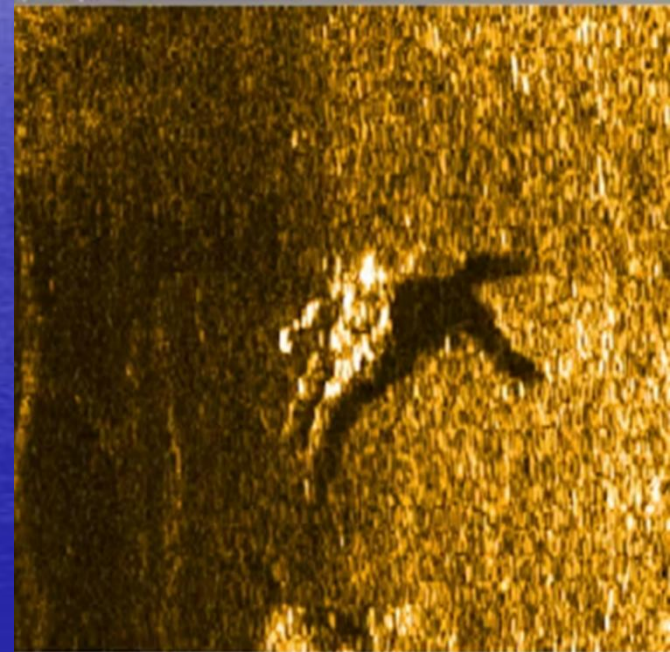
- The ROVs are utilized throughout the Port of Houston and Houston Ship Channel for the following:
  - Search and Recovery Missions
  - Ship Hull Searches
  - Underwater Pier Searches
  - Evidence Recovery
- ROVs are utilized as the primary search tool for our unit and allow for much safer underwater search missions for our dive team members
- All ROVs were purchased through Port Security Grants which were funded with assistance from the Houston Ship Channel Security District.



# Sonar Images from Dive Scenes

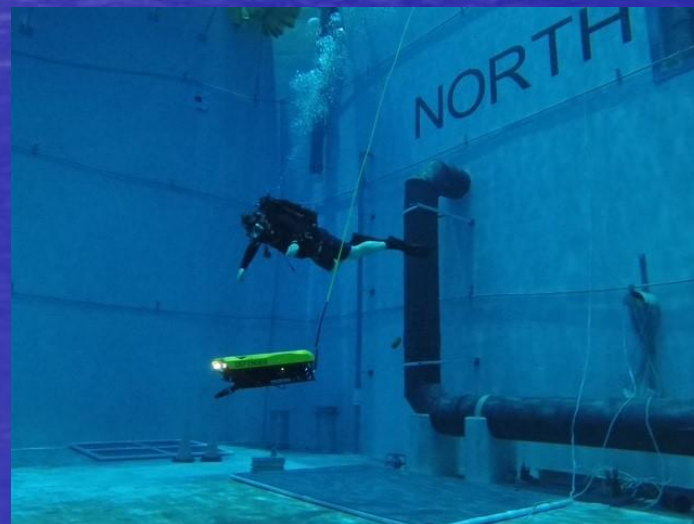
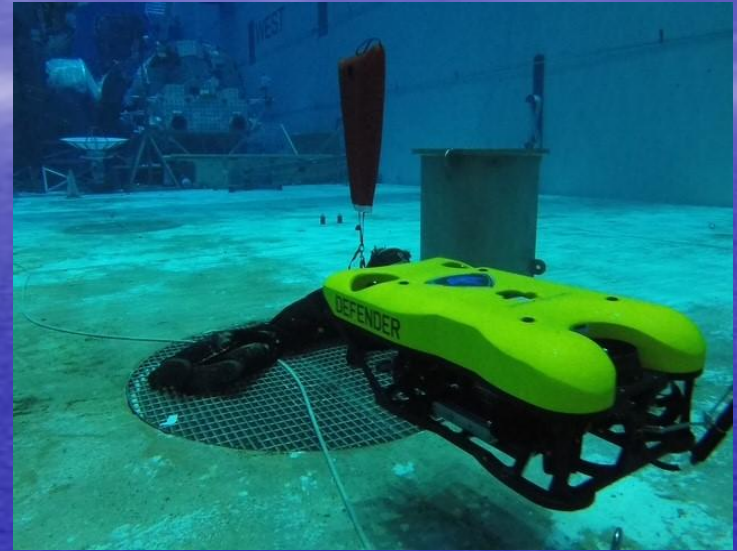


Vehicle Recovery



Body Recovery

# ROV Training at NASA Neutral Buoyancy Lab





# Dive Scenes

- Notable Scenes where ROV's were utilized:
  - Audrey Cunningham in Polk County, Texas (2024)
  - Sunken Tug Boat in Houston Ship Channel (2024)
  - Multiple Ship Hull Searches for Possible Narcotics
  - Amazon 767 Plane Crash in Anahuac, Texas (2019)
  - Army Apache Helicopter Crash in the Houston Ship Channel (2016)



The background is a smooth blue gradient, transitioning from a lighter blue at the top to a darker blue at the bottom. On the left side, there is a bright, glowing area that resembles a sun or light source, with a soft, white-to-yellow glow that fades into the blue. The overall effect is a serene, open sky or ocean scene.

Questions?