

Road Projects & Regional Impacts

Sam Houston Ship Channel Bridge

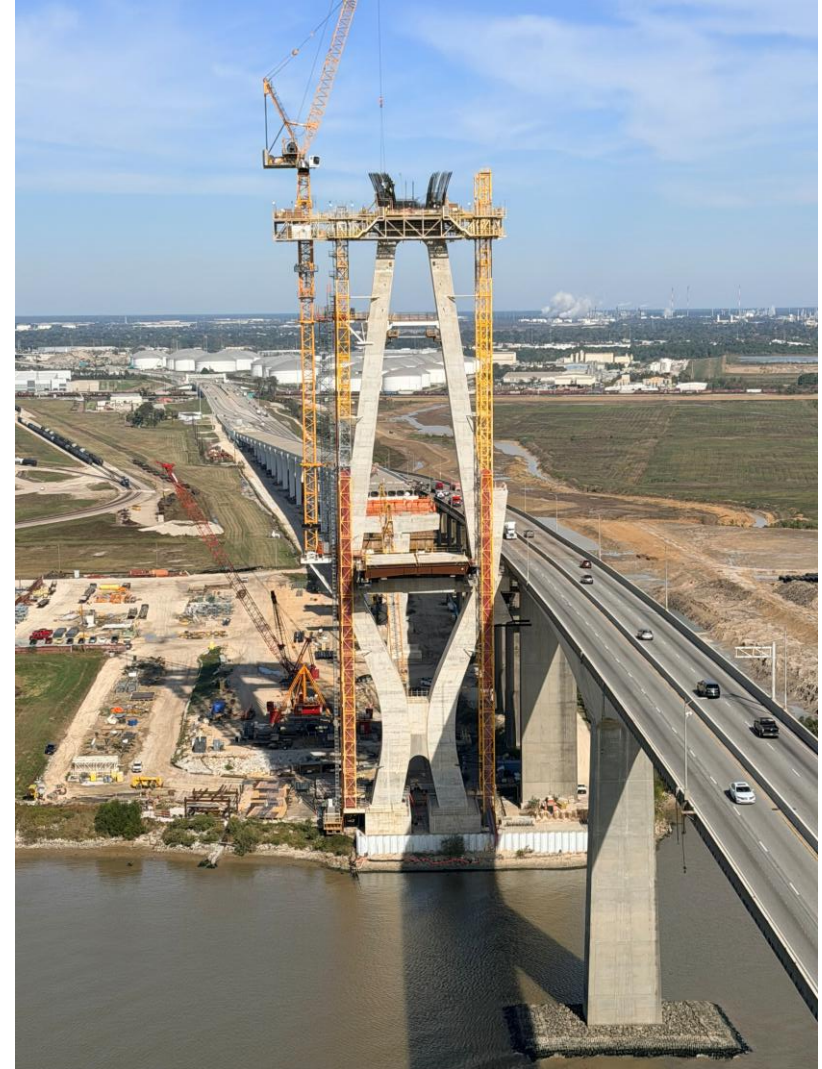
Leilany Thielen, P.E. Deputy Director Capital Projects & Infrastructure

February 24, 2026

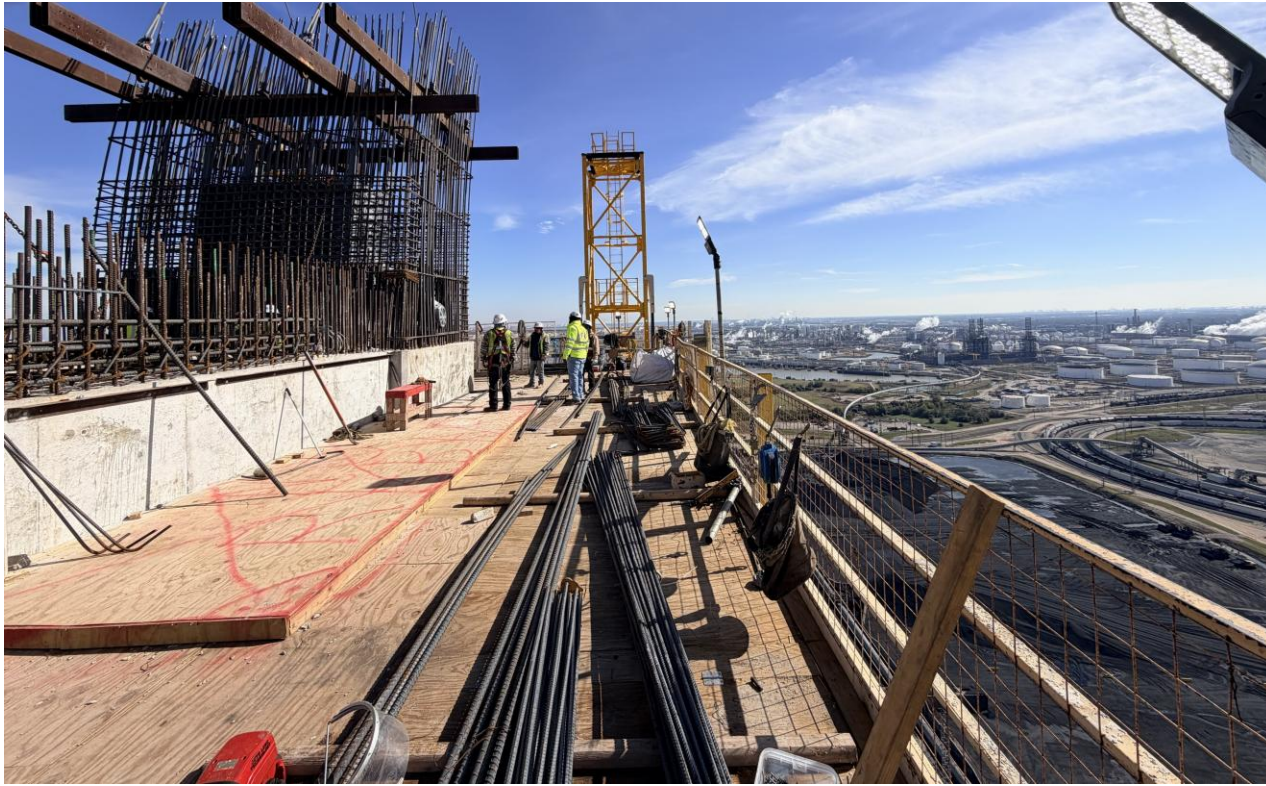


Background

- More than 60,000 vehicles use the Ship Channel Bridge each day
- Traffic expected to grow 3X in the next 10 years
- Bridge design updated with **steel girders** for an even **safer** structure
- **Worksite plan to keep traffic moving** during construction



Why It Matters



The reconstruction delivers a safer, stronger, and more reliable connection across the Houston Ship Channel

Enhancements:

- Increased weight-bearing abilities with steel vs. concrete support girders
- Shoulders on both sides of the road to accommodate stalled and emergency vehicles
- Designed to be more resilient and sustainable while increasing traffic capacity



Benefits

- Enhanced safety and efficiency
- Improved visibility for drivers
 - Additional lighting
 - Gradual incline
- Larger lanes to increase capacity
- Higher speed limit for increased traffic flow



Benefits

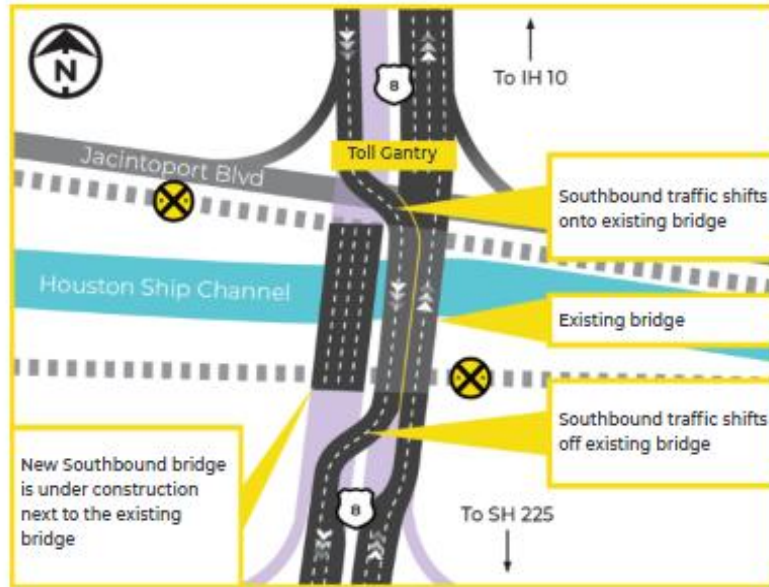


- Increased mobility
- Bridge foundations built outside of the waterway to minimize any potential conflicts with vessels
- Allows for potential expansion of the Houston Ship Channel by other entities

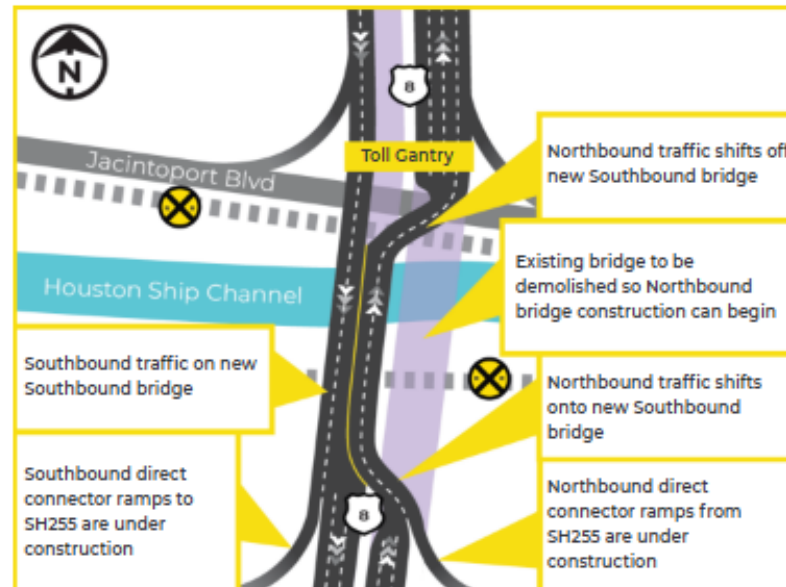


Traffic Plan

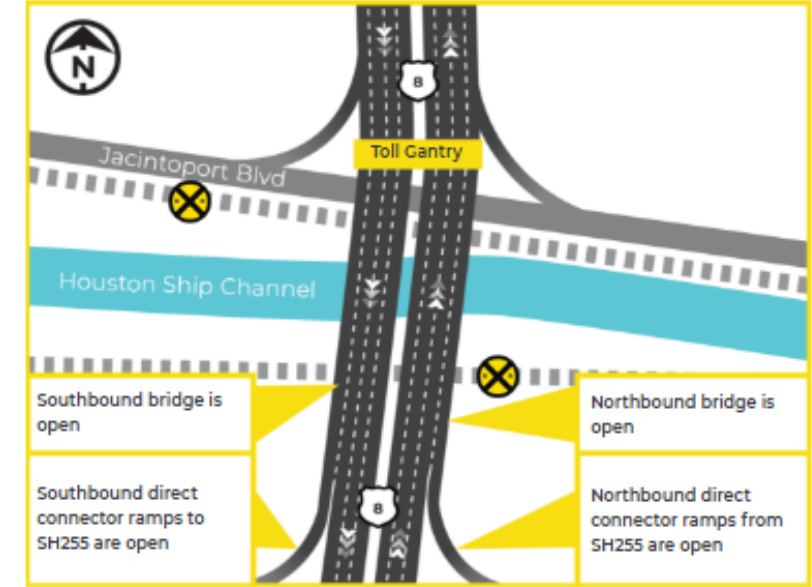
Current Phase



Phase 2



Future Configuration





SAM HOUSTON TOLLWAY SHIP CHANNEL BRIDGE PROGRAM

1. 514 ft. pylons
2. Main span will be 1,320 ft.
3. Ship clearance will be 175 ft.

4. Foundations built outside the waterway
5. Design reduces grade for better visibility and a higher speed limit

Current Activity



Cabling





Sam Houston Tollway and SH 225 Direct Connectors

Update

- 4 out of the 8 DC's are under construction- in GREEN
- Completion of these 4 DC's in January 2028
- Remainder of the DC's will complete design and begin construction after
 - Coordination with TxDOT and SH 225



Sam Houston Tollway/SH-225 Interchange Project
Construction Map



Current Activity

SH 225 DC program

- Widening SH 225 Main lanes where the DC's will tie in
- Have been working on Westbound 225
 - Nightly closures of the Frontage Road intersection continue until Mid February, weather permitting.



Current Activity

SH 225 DC program

- Drilling Foundations, installing Columns NB





Stay connected with us!

 /HCTRA

 @HCTRA

 @HCTRA_EZTAG

HCTRA.ORG

